

Recessed Skin Fittings (Thru Hulls)



Designed and made in New Zealand, TruDesign Certified Recessed Skin Fittings (Thru Hulls) are precision moulded from glass-reinforced Nylon composite. They eliminate all corrosion and bonding problems associated with electrolysis giving peace of mind with respect to safety of your vessel.

Key Features:

- Low profile for less drag below the water line.
- Suitable for use below the water line.
- Compatible with all hull types – Can be used on aluminium, steel, wood, composite & GRP hulls.
- Immune to corrosion & electrolysis – No corrosion breakages, increased safety.
- Chemical resistant – Unaffected by diesel, petrol, chemicals, and antifouling paints.
- U.V resistant – Will not degrade or discolour from the sun's ultraviolet rays.
- Paintable with all types of antifoul including Coppercoat™.
- Fits TruDesign Ball Valves and other parallel BSP or NPS threads – Universal compatibility to TRUDESIGN™ brand fittings and other marine hardware.
- Large operating range – Suitable for all marine conditions from -40°C to +110°C

Compliance:

ISO 9093-2021 Small craft -TRUDESIGN Skin Fittings and Ball Valves comply with ISO 9093:2021, certified by the International Marine Certification Institute (IMCI) and type approved by Bureau Veritas.

(For sizes ¾" through to 3", Excludes the ½" size.)

American ABYC H-27 – 500Lb static load test - TRUDESIGN Skin Fittings and Ball Valves meet the American ABYC H-27 – 500Lb static load test; Seacocks, Thru-Hull Fittings, and Drain Plugs – independently verified by IMANNA Laboratory Inc.

For sizes 1¼" through to 3" the ABYC Collar it is not a requirement to meet this static load test. The ABYC Load Bearing Collar is required for the 1" size to meet this static load test. The ½" does not meet the 500Lb static load test with or without the ABYC collar.

Part Numbers (BSP):

Description	BLACK		WHITE	
	TAGGED	PKG	TAGGED	PKG
Skin Fitting Recessed ½"	91125	90676	91131	90709
Skin Fitting Recessed ¾"	91126	90677	91132	90710
Skin Fitting Recessed 1"	91127	90678	91133	90711
Skin Fitting Recessed 1 ¼"	91128	90679	91134	90712
Skin Fitting Recessed 1 ½"	91129	90680	91135	90713
Skin Fitting Recessed 2"	91130	90681	91497	91496

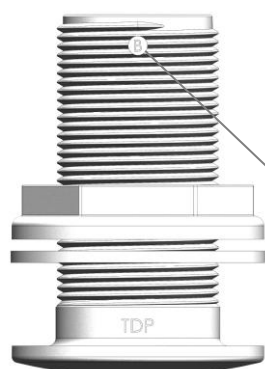
PKG product is supplied branded bags.

Part Numbers (NPS):

Description	BLACK TAGGED	WHITE TAGGED
Thru-hull Recessed ½"	91237	91242
Thru-hull Recessed ¾"	91238	91243
Thru-hull Recessed 1"	91239	91244
Thru-hull Recessed 1 ¼"	91240	91245
Thru-hull Recessed 1 ½"	91241	91246
Thru-hull Recessed 2"	91498	91499

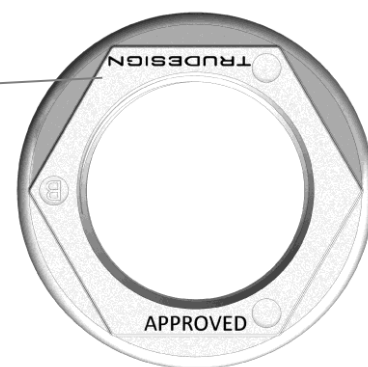
Identification:

TruDesign Skin Fittings (Thru Hulls) are printed and marked with the following information.



TruDesign branding. You can identify from inside the hull that genuine fittings are installed.

Engraved 'B' for BSP thread, or 'N' for NPS thread



Installation:

TruDesign Recessed Skin Fitting Mould Plugs:

Designed to form a recess in a fibre glass hull during lay-up, to suit TruDesign recessed skin fittings. Go to our product information sheet on the TruDesign Website – Scan the QR code



Location, Sealing and Installation:

For Installation Instructions and tools, go to our Technical Information Sheet on the TruDesign Website – Scan QR Code



Thread Sealing: Ball Valve to Skin Fitting and Tails (Thru Hulls):

For Thread Sealing Instructions go to our Technical Information Sheet on the TruDesign Website – Scan QR Code



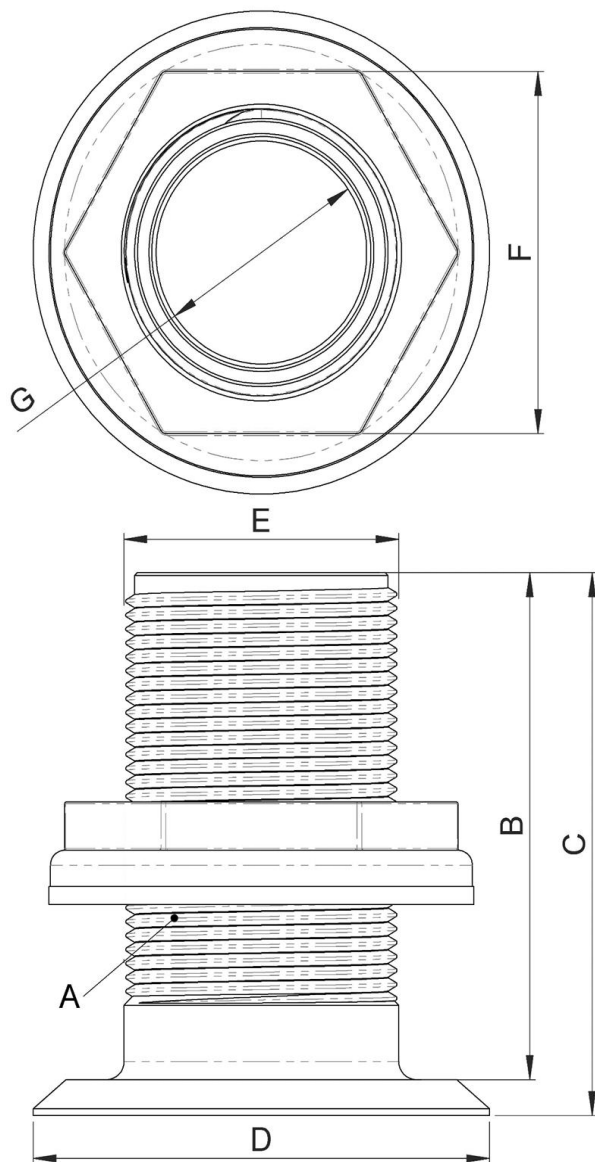
Hull Thickness:

Size	Maximum Hull Thickness allowing for 70% thread engagement into Ball Valve
½"	36mm
¾"	36mm
1"	36mm
1 ¼"	49mm
1 ½"	49mm
2"	74mm

Note; it is recommended for very thin hulls that a backing plate be added to make the “effective hull thickness” a minimum of 20mm.

Dimensions:

All dimensions are nominal. All dimension in mm unless specified.



A	B		C		D		E		F		G	
Thread Size	Thread Length		Overall Length		Head Diameter		Cutout Diameter		Hex Size AF		Minimum Internal	
½"	67mm	2 2/3"	70mm	2 3/4"	32mm	1 1/4"	22mm	6/7"	28mm	1 1/9"	12mm	1/2"
¾"	66mm	2 4/7"	70mm	2 3/4"	42mm	1 2/3"	27mm	1"	34mm	1 1/3"	17mm	2/3"
1"	66mm	2 4/7"	70mm	2 3/4"	52mm	2"	34mm	1 1/3"	42mm	1 2/3"	23mm	1"
1¼"	85mm	3 1/3"	90mm	3 1/2"	64mm	2 1/2"	42mm	1 2/3"	52mm	2"	30mm	1 1/5"
1½"	84mm	3 1/3"	90mm	3 1/2"	80mm	3 1/7"	48mm	1 8/9"	60mm	2 1/3"	36mm	1 2/5"
2"	114mm	4 1/2"	121mm	4 3/4"	100mm	4"	60mm	2 1/3"	75mm	3"	47mm	1 6/7"

The information contained in this information sheet is for general information purposes only. The information is provided by TruDesign™ and while we endeavour to keep the information up to date and correct, we make no representations or warranties of any kind, express or implied, about the completeness, accuracy, reliability, suitability, or availability. Any reliance you place on such information is therefore strictly at your own risk.